



Rushcliffe & Gedling School Sport Partnerships

Gymnastics Coach Two Posts

Recruitment Pack

CONTENTS

1. Background to the Partnerships
2. Key Responsibilities & Job Description
3. Person Specification
4. Professional Development
5. Background to Sportworks
6. Application and Interview Details

1. Background

RUSHCLIFFE AND GEDLING SCHOOL SPORT PARTNERSHIPS



The Rushcliffe and Gedling School Sport Partnerships surround the City of Nottingham.

The partnerships began in 2003 and 2004 respectively and in total incorporate 14 secondary schools, 82 primary schools and 3 Special Schools.

The Partnership Development Manager's (PDM's) are hosted by Dayncourt School Specialist Sports College in Radcliffe-on-Trent and Wheldon Sports College in Carlton.

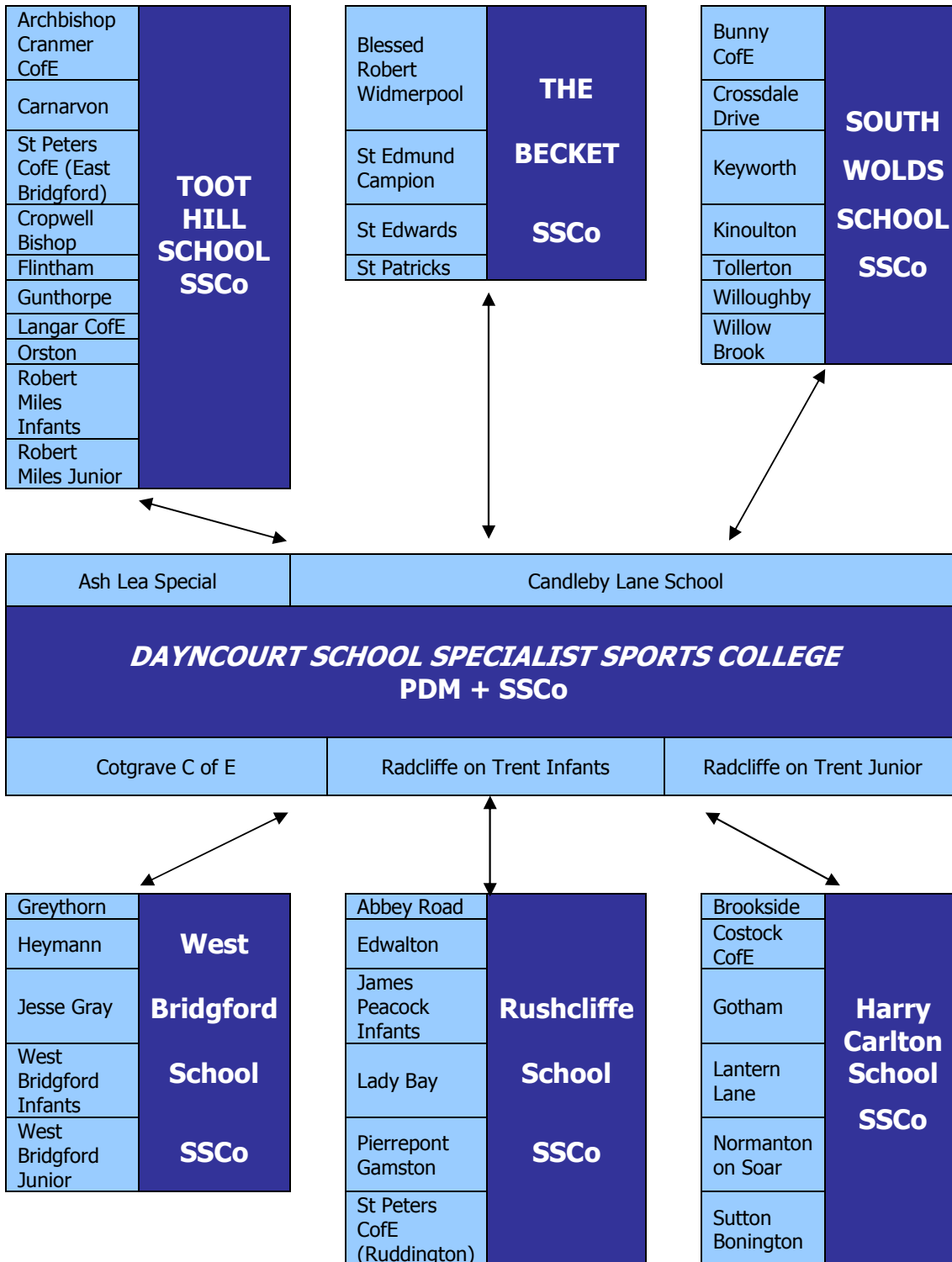
The secondary schools within both partnerships all host a School Sport Co-ordinator whilst Primary Link Teachers are in post in all Primary schools. In addition, both partnerships share a Competition Manager whilst Rushcliffe hosts a full time multi skills community coach. All of the schools contribute financially towards raising partnership monies on an annual basis and fully endorse the School Sport Partnerships.

Pupils across the partnerships have access to good sports facilities within and outside curricular time and have pro-active Sports Development departments who are key partners to the partnership's continued growth and development towards the PE and Sport Strategy for Young People (PESSYP) and the PSA22 target around the 5 hour offer. The development of effective pathways from school to community based sport, is central to all aspects of the partnerships' work.

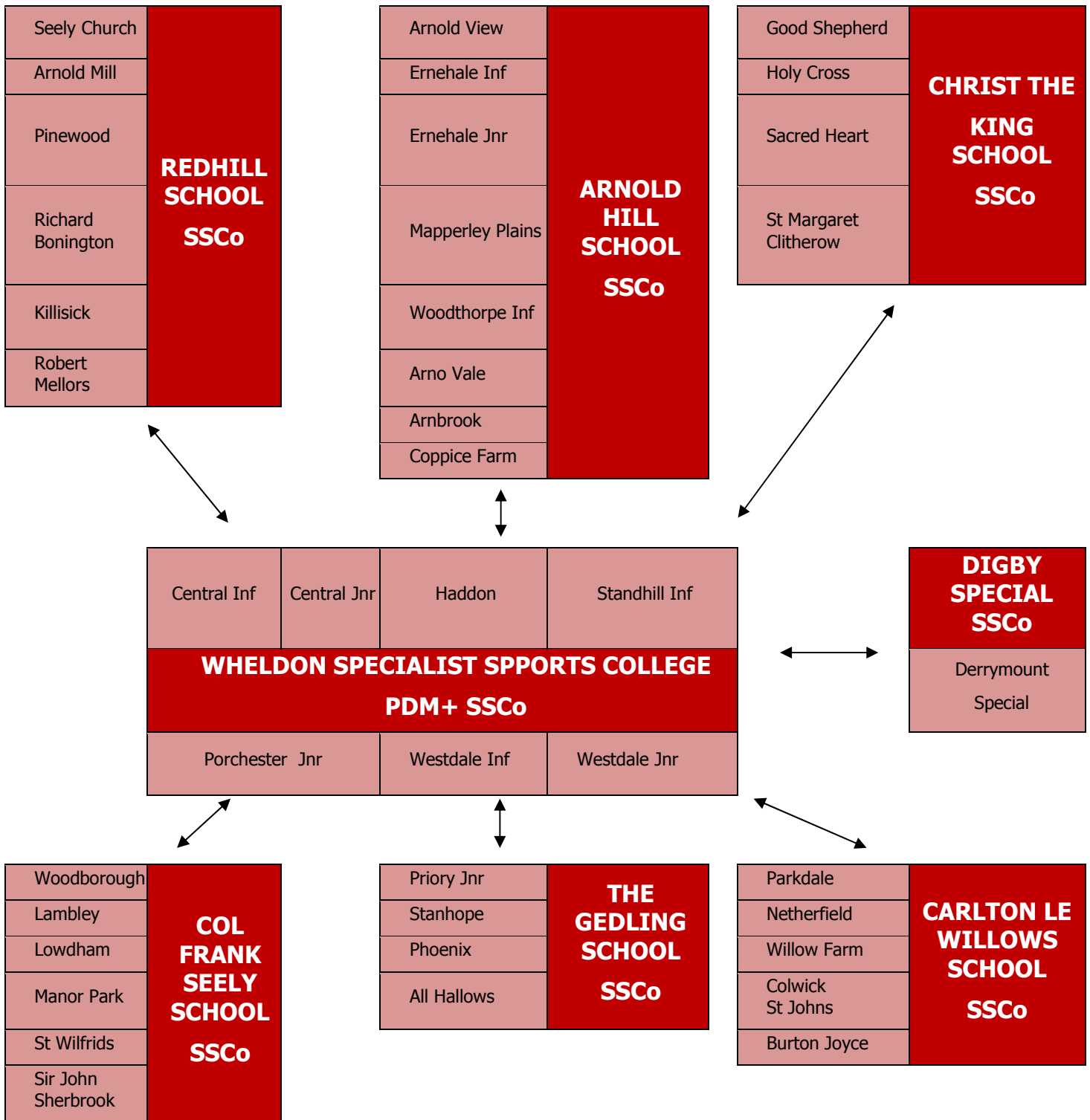
Schools within the partnerships work well together, sharing good practice and resources for the benefit of pupils throughout the area. Staff are committed to delivering a high quality curriculum to their pupils as well as providing balanced out of schools hours programmes and appropriate competitive opportunities.

Sport and Physical Education play an important part in pupil development. Young people enjoy being involved in activities and derive great pleasure from them. They enable pupils, parents and teachers, to share the satisfaction of participation and achievement. The development of leadership plays an important role in the Partnerships with the majority of schools involved in Step into Sport.

A model illustrating the Rushcliffe SSP



A model illustrating the Gedling SSP



2. Job Description

Host Organisations: Gedling and Rushcliffe School Sport Partnership's

Location: Within the Gedling and Rushcliffe School Sport Partnership's

Job Title: Gymnastics Coach

Position: Two positions both at 24 hours per week

Salary: £20,000 pro rata (£12,972.97)

Duration: 2 Year Fixed Term

Responsible to: Gedling and Rushcliffe School Sport Partnership's

BACKGROUND INFORMATION

These two exciting new roles will focus on increasing participation in sport by young people at Key Stages 1 and 2. It will play a crucial role in supporting the drive to increase participation in gymnastics in the schools within both the Gedling and Rushcliffe School Sport Partnership areas.

Please note –

- ***Both of the Gymnastics coaches will be expected to work across the two Partnership areas although timetables will be structured to minimise travel times.***
- ***The working hours for both posts will predominantly be in the afternoons, Monday - Friday.***



JOB PURPOSE

To develop and deliver a programme of gymnastics based activities to increase participation in schools within the Gedling and Rushcliffe School Sport Partnerships in Nottingham.

Key Responsibilities:

1. To plan and deliver gymnastics based activities to support the delivery of National Curriculum requirements at identified schools across Gedling and Rushcliffe SSP's
2. Plan programmes to meet students' needs and aspirations
3. To create and enhance opportunities for extra-curricular gymnastics based activities at identified schools
4. To work with local partner gymnastics clubs to create sustainable pathways for students to access regular opportunities
5. Liaise with the Partnership Development Managers, Youth Sport Trust and British Gymnastics to integrate & implement local and national initiatives
6. Maintain records, communicate with others and perform administration duties as required
7. To work in line with the objectives of the School Sport Partnerships development plans
8. Undertake the role with respect and due regard to equality of opportunity

Job Description:

1. To Support teachers and staff in delivering a varied programme of gymnastics activities to primary aged students both within and beyond the curriculum.
2. To take a professional approach in the planning, preparation and organisation of coaching sessions.
3. To plan and deliver a varied and interesting programme of gymnastics activity in a variety of venues as direct by the programme manager.
4. To ensure that coaching session are suitably planned and developed for all people including those less able or with specific needs.
5. To mentor other coaches, where appropriate, and provide advice and guidance in the planning and delivery of activities.
6. To implement appropriate Health and Safety policies and procedures in order to ensure a safe, effective, child friendly environment at all sessions.
7. To be responsible for herself/himself and others in accordance with the Health and Safety at Work etc. Act 1974
8. To maintain current knowledge of Governing Body and other relevant agencies, programmes, policies, guidance and advice.
9. To be committed to continuous professional development (CPD) relevant to the post.
10. To attend meetings as and when required/directed.
11. To undertake any other duties appropriate to the post.

3. Person Specification

Technical Criteria

Essential

- a. To hold a minimum of a Level 2 award in General Gymnastics
- b. Knowledge and understanding of;
 - i. Planning and delivery of coaching sessions
 - ii. Coaching mixed ability groups
 - iii. Coaching a variety of age groups
 - iv. Working and adapting to coach in different environments
 - v. Child protection within sport.
- c. Have at least 2 years experience in a coaching role

Desirable

- a. A Degree or HND in a sport related subject
- b. Evidence of involvement in a range of sport and physical activities.
- c. Have experience of Working within:
 - i. Physical Education especially around Key Stages 1 and 2
 - ii. Special needs groups
 - iii. Sports Development
- d. Knowledge of FUNDamentals & the principles of LTAD
- e. Have a good understanding of IT.
- f. Good insight into current sporting issues.

Personal

Essential

- a. Enthusiasm and passion for sport in particular Sports Coaching.
- b. Good verbal and written communication skills.
- c. Self motivated, resilient, enthusiastic.
- d. Ability to demonstrate commitment.
- e. Confident and commands respect from participants and others.
- f. Ability to work successfully both independently and as part of a team.
- g. Ability to work outside normal working hours, if required, which may include evening and weekend work.
- h. Ability to drive, with access to own transport.
- i. Willingness to undergo an enhanced CRB Disclosure check.

Leadership and Management

Essential

- a. Ability to manage whole group.
- b. Effective mentor to other coaches, volunteers and leaders.
- c. Roles models appropriate behaviours
- d. Inspires participants and colleagues to high performance.
- e. Evaluates performance of self and colleagues.

Desirable

- a. Commitment to own professional development.



4. Professional Development

The Partnership Development Manager's are committed to continuous professional development of all their staff. Training will be provided where appropriate and you will be given support to fulfil your potential within this role.

5. Sportworks Group

Sportworks Group is the employer on behalf of the two Partnerships and specialises in recruitment and employment within the sports sector. We have developed an effective and versatile employment service to recruit and employ high calibre coaches, development officers and people involved in sports administration on behalf of schools, School Sport Partnerships, County Sports Partnerships, clubs and community organisations.

We offer support and advice to clients during their recruitment process then employ the successful candidates on a fixed term basis, enabling our clients to concentrate on their core business and enjoy the benefits of appointing new personnel to their team without the usual inconvenience associated with employment.

Sportworks is a member of the Recruitment and Employment Confederation (REC).

Contact us:

Tel: 01629 706579

Fax: 01629 734893

Email: info@sportworksuk.com

Web: www.sportworksuk.com



6. Application Details

Closing Date: 12.00pm, Friday 24th July 2009

Interview Date: TBC but week commencing 10th August 2009

The interview process will include a practical coaching session with year 6 pupils, followed by a formal interview.

You will therefore need to prepare a 15 minute gymnastics coaching session appropriate for these pupils.

Successful applicants will be provided with an equipment list.

Please complete the application form attached and return it to:

Matthew Green
Sportworks
Unit 18, Molyneux Business Park
Whitworth Road
Darley Dale
Matlock
Derbyshire
DE4 2HJ

Alternatively, complete the application form electronically and return it to:
matthew@sportworksuk.com

For enquiries telephone 01629 706579